

# AWIP 5-STATION 90° ROOF SEAMER FIELD GUIDE

*Part# 50950*

9.14.23



Contact us at 1-888-343-0456 or online at [www.diroofseamers.com](http://www.diroofseamers.com)

D.I. Roof Seamers  
915 Highway 45  
Corinth, MS 38834

***\*READ COMPLETELY BEFORE OPERATION OF MACHINE OR TOOLS\****

Safety Regulations set forth by the Occupational Safety and Health Act, local, state, and/or federal agencies should always be adhered to.

# IMPORTANT INFORMATION

---

- This Roof Seamer has been set up for your specific panel profile. Never use this machine on any other panel or profile.
- Do not attempt to alter or modify the machine in any way.
- Follow all safety suggestions and warnings in this guide as well as those posted on the machine itself.
- It is recommended to “seam as you go”. In other words, seam the panels as they are being installed. This helps ensure that each panel is kept within module and installed correctly. If you cannot “seam as you go”, the order of seaming should follow the order of panel installation. The first panel installed should be the first panel seamed.
- Use only D.I. Roof Seamers hand crimpers.
- Use heightened attention when seaming the first few seams, until a pattern of properly seamed ribs is established. Then, follow the same process on similar seams. Again, use heightened attention if conditions change, such as different support types, clip spacing, or roof slope.
- For additional information, visit [www.diroofseamers.com](http://www.diroofseamers.com)

## **IMPORTANT**

**Power Supply: This machine requires a 20-amp, 120-volt AC power supply. Poor performance and motor damage can result from use an improper power supply. The following rules are to be followed:**

- 1. Maximum extension cord length: 75'**
- 2. Minimum of 10-gauge 10/2 cord**
- 3. Power supply must be dedicated to the machine**

**SCAN OUR QR CODES FOR FURTHER INFORMATION**



### **Operational Videos**



### **D.I. Roof Seamers App**

This is a single direction 90<sup>0</sup> Roof Seamer. It will complete the 90<sup>0</sup> (Single Lock) seam in a single pass. You simply engage it on the hand-crimped portion of the seam and apply power. It is important to remember to use extreme caution when reaching the edge of the roof. Stop and disengage the locking handles of the seamer while the wheels remain on the roof panel.

“Single Direction Seamer” means that the seamer must run from eave-to-ridge or ridge-to-eave, depending on the direction of panel installation. When this type of seamer reaches the end of the panel, it must be removed and transported back to the starting end to seam the next rib.

Do not run the seamer within 6” of the end of a panel without using extreme caution. Hand crimping this area may be necessary if there are safety concerns or risks. Use your hand crimpers to finish any area that the seamer may not be able to complete such as the ridge cap area, end lap, or pitch change in the roof. Hand crimpers can be rented from D.I. Roof Seamers.

**Note:** Images used in this guide are for representation purposes only and may not be exact to your job.

**NOTICE:** As directed in the manufacturer’s erection guide, hand crimp the clip to the male side of the panel **ONLY** during the installation of the

roof panels. This should be done during panel installation, before the need for a roof seamer. This is accomplished with a different hand crimper than the one needed for use with the roof seamer. Consult your erection guide for additional details.



## STEP 1

---

Before beginning, ensure that the panels are installed per the manufacturer's instructions and are free of all debris and contaminants such as sand, snow, excessive fluids, sealant/mastic, tools, extensions cords, etc. Keep a safety tether attached to the seamer anytime it is on the roof to prevent it from falling off. Failure to do so could result in machine damage, serious injury, and/or death.

Note: The roof seamer is designed to run from the ridge to the low eave when panels are installed per the manufacturer's instructions.

**Note: The machines tether point is not intended to arrest the machine during a free fall from the roof.**

# CRIMPING PROCEDURE

---

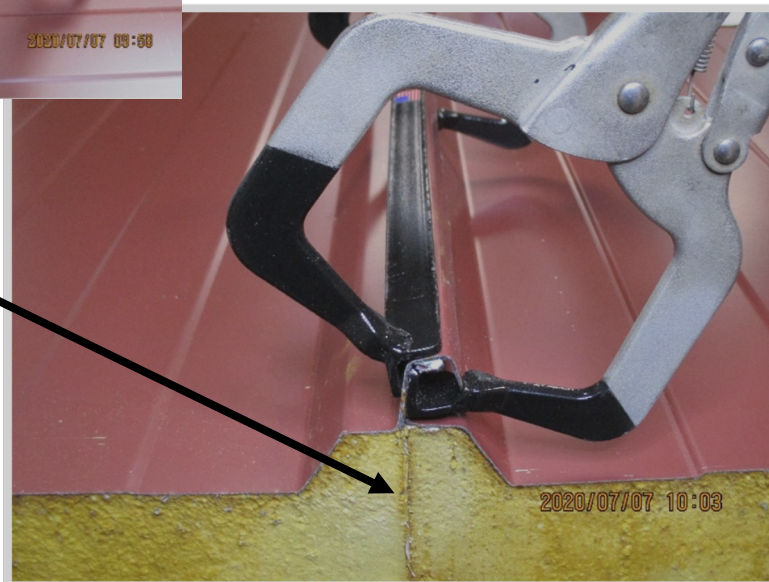
Hand crimp the beginning of each panel to prepare it for the seamer.

Failure to follow these crimping procedures will potentially result in damage to the machine and/or the panel.

**Step #1-** Place the Seam Clamp on the seam, flush to the end of the panel. This will force the top sheet down and nest the two panels together tightly.

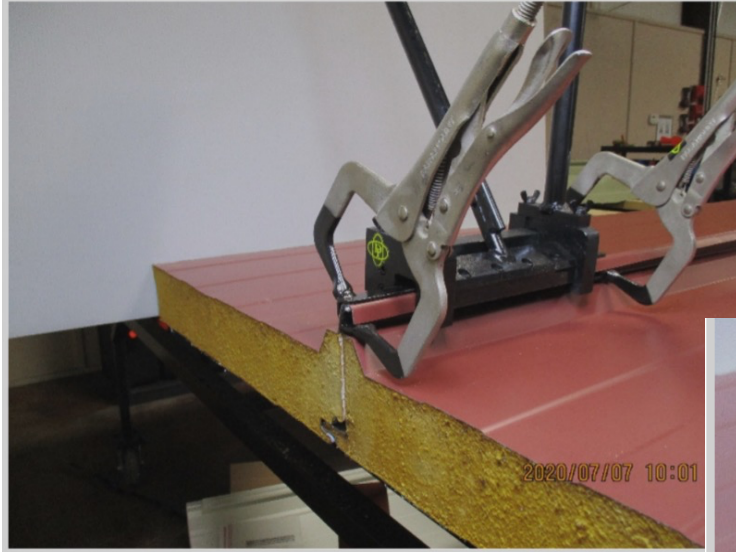


**Note:** There should be "foam-to-foam" contact on each adjoining panel.



Separation between the foam will cause seaming issues.

**Step #2-** Place the provided hand crimper on top of the clamp *and* panel, between the two handles. Move the hand crimper's action handle its full range of motion to complete the crimp. This crimp will secure the two panels together.



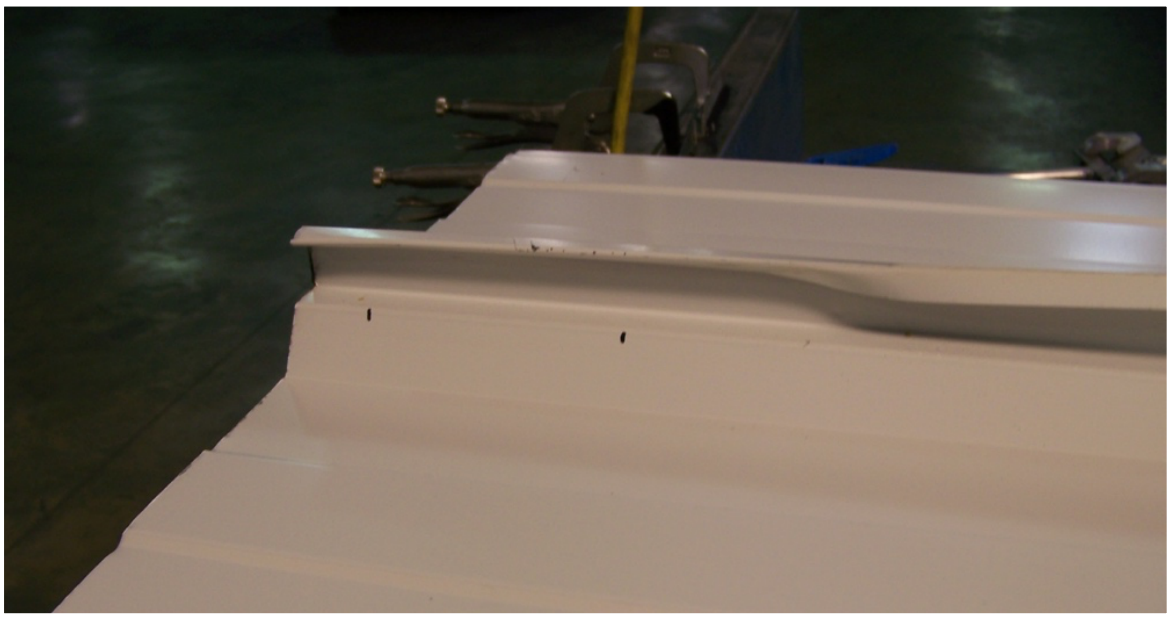
**DO NOT OVER CRIMP.**

**THIS WILL DAMAGE THE CRIMPER.**

**Step #3-** Remove the hand crimper and clamp. Crimp once again at the end of the run to form the small "tag" remaining from the clamped area.

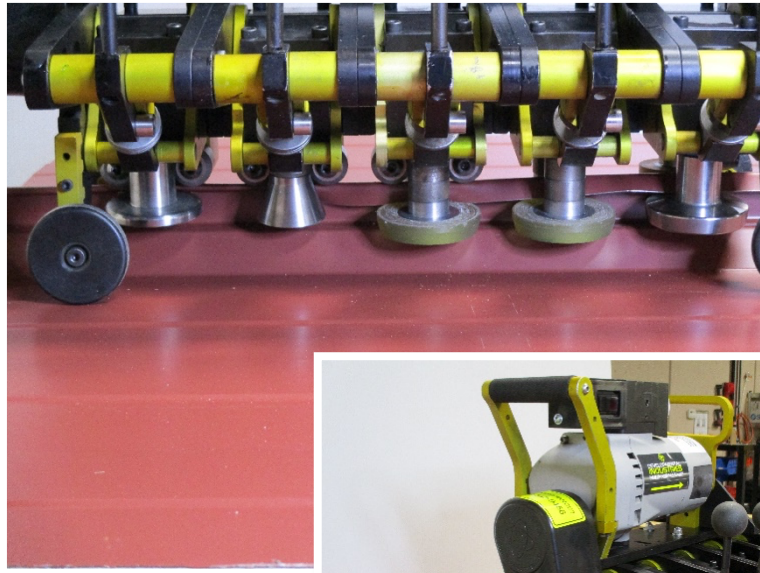


**Step #4-** The seam is now ready for the roof seamer to be applied.

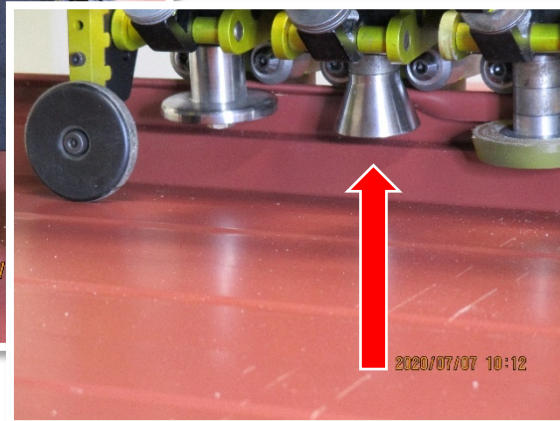
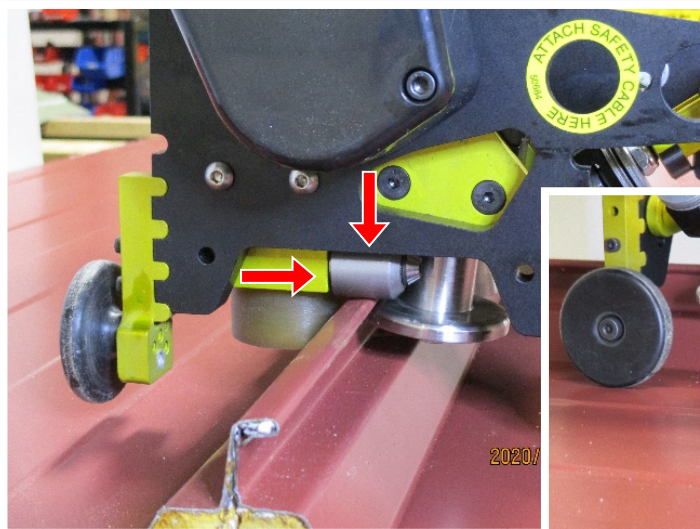


## STEP 2

Position the roof seamer over the hand-crimped portion as shown, giving special attention to the direction the machine will travel after power is supplied. This will be indicated on the top or sides of the power unit. The roof seamer is designed to run from the ridge to the low eave.



**NOTE:** When positioning the seamer onto the panel, ensure that the seamer is seated on the panel as shown *before* locking the handles into position. The 4th roller must be positioned on the hand-crimped area as shown below. **The seamer must be engaged in this manner. Failure to do so will result in panel damage.**





## STEP 3

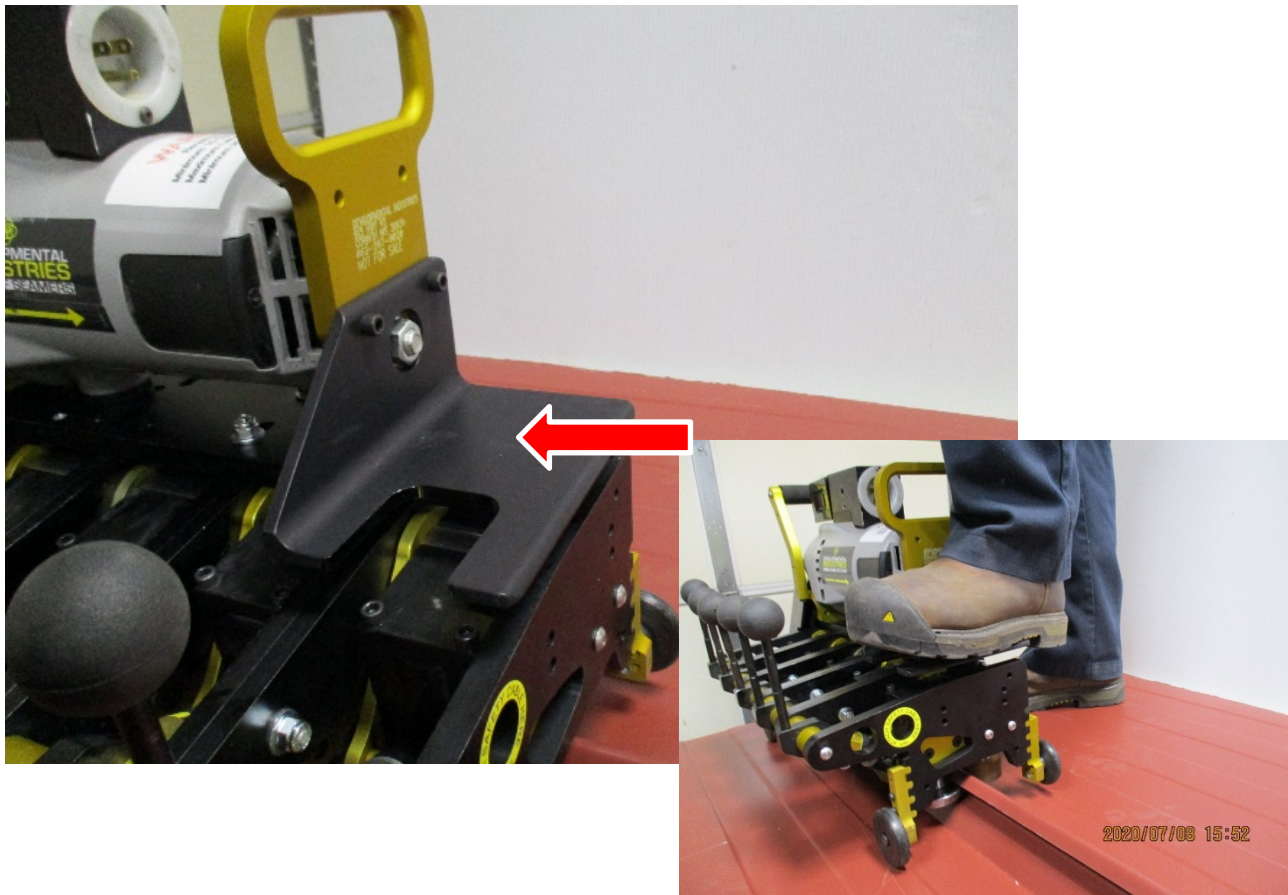
---

Connect the power supply into the quick-release plug near the handle of the machine and turn the machine on. Run the seamer approximately 12" to ensure that you are receiving the desired seaming operation. If there are any issues, stop immediately and **contact D.I. Technical Support at 1-888-343-0456.**

## STEP 4

---

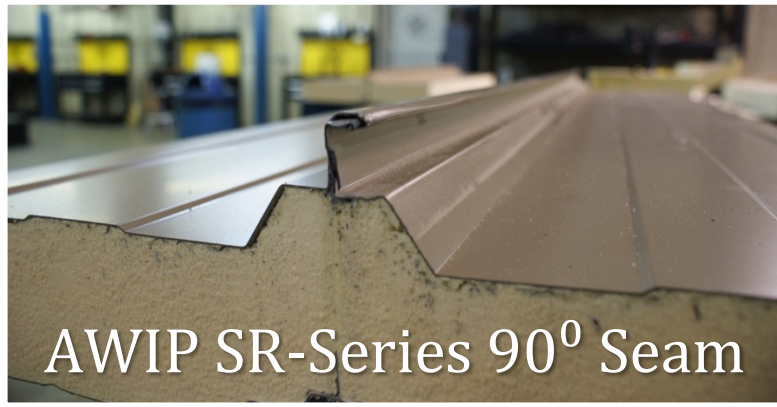
Apply downward pressure to the pressure plate on the front of the machine when starting the seamer, at end laps and any trouble area where the seamer tries to ride off the panel. This can occur when there is panel separation or other contributing factors.



# FINISHED SEAM

---

After running the Roof Seamer, the finished seam profile should look like this.



**Note:** The roof seamer may leave dark forming marks on light-colored panels. This is acceptable as long as the paint finish is not damaged. Marks can be rubbed off by hand – DO NOT use solvents that will soften or remove paint.

# MAINTENANCE REQUIREMENTS

---

- This machine requires daily cleaning. Additional cleaning may be required based on job site conditions. It is imperative that tooling is kept clean and free of debris.
- When not in use, always store your roof seamer in a dry place to prevent damage to the machine. **NEVER** operate it in inclement weather, such as rain, thunder, lightning, or snow.
- Each day that the seamer is to be used, ensure tooling bolts are tight to 25 ft-lbs. before the beginning of any seaming.
- If you need D.I. Technical Support, please **contact us at 1-888-343-0456.**